

**prc**  
LASER

# HANDHELD FIBER LASER WELDER

JUMP YOUR WELDING TO LIGHTSPEED



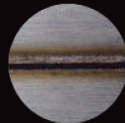


PRC's Handheld Fiber Laser Welder is a versatile tool for welding and surface cleaning.

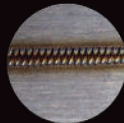
Novices and seasoned pros will find it is faster and easier than TIG.

- » Ergonomic Grip Handle
- » User Friendly Interface
- » Appearance Welds
- » Weld Dissimilar Material
- » Programable Weld Patterns
- » Library of Preconfigured Settings

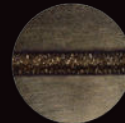
STAINLESS



BRASS



ALLUMINUM



# 1-Year Warranty

Backed by PRC Laser's legendary service and support team.

Since 1985 PRC Laser has delivered and supported thousands of high-power laser solutions for industrial applications world-wide.

Our manufacturing facility and headquarters is in South Carolina and we have a service technicians across the United States.

# Optional Accessories

Wire feeding system

Specialized safety equipment



# Technical Specifications

## OPTICAL

Max Output	1500W
Peak Power	2500W
Wobble Length	≤5mm
Fiber Cable Length	50um/5m/10m
Central Wavelength	1070±10nm
Red Light Pointer	650nm
Interface	QBH

## MECHANICAL

Weight	140lbs
Dimensions	25.5 x 12 x 24.5
Supply Voltage	220v/50Hz/60Hz
Gas Type	Ar, N <sub>2</sub> , Ar+CO <sub>2</sub> mix



## MATERIAL

	Single Side	Both Sides
--	-------------	------------

Stainless Steel	≤4mm	≤10mm
Mild Steel	≤4mm	≤10mm
Aluminum	≤3mm	≤8mm
Brass	≤2mm	≤4mm

## OTHER

976nm Pump Technology  
High Efficiency WPE ≥42%  
Single Wobble Welding Head  
Adjustable Welding Width  
Compact Design  
Air-Cooled

Send us your application questions.

[Contact Sales](#)



**Products you can rely on.  
Support you can depend on.**



**prc**  
L A S E R

4279-K Crosspoint Drive  
N. Charleston, South Carolina

**Learn More at [prclaser.com](http://prclaser.com)**